



OPERATING MANUAL

STAGEVAN III MOBILE STAGE UNIT

STAGE CRAFT PRODUCTIONS INC.
SERIAL # 2N9STVN

STAGELINE® products are designed and built by
STAGELINE® inc. an international leader in mobile staging

All right reserved. Any and all forms of adaptation or reproduction of this document including plans and drawings found herein, in whole or in part, is strictly forbidden without the written authorisation of *STAGELINE*® inc

STAGEVAN III

TABLE OF CONTENTS

CAUTION.....	2
FIGURE 1: GENERAL VIEW.....	3
SPECIFICATIONS.....	4
ACCESSORIES.....	5
RECOMMENDED TOOLS.....	5
HOW TO OPERATE THE HYDRAULIC SYSTEM.....	6
FIGURE 2: FRONT HYDRAULIC CONTROL PANEL.....	8
FIGURE 3: REAR HYDRAULIC CONTROL PANEL.....	9
FIGURE 3a: ROOF LEVERS.....	9a
INSTALLATION.....	10
DISMANTLING.....	19
PHOTOS.....	25
FIGURE 4: RIGGING DIAGRAM.....	29
MAINTENANCE.....	30
TROUBLESHOOTING.....	31
CUSTOMER SERVICE.....	32
PERIODIC MAINTENANCE CHECK LIST.....	33

STAGEVAN III

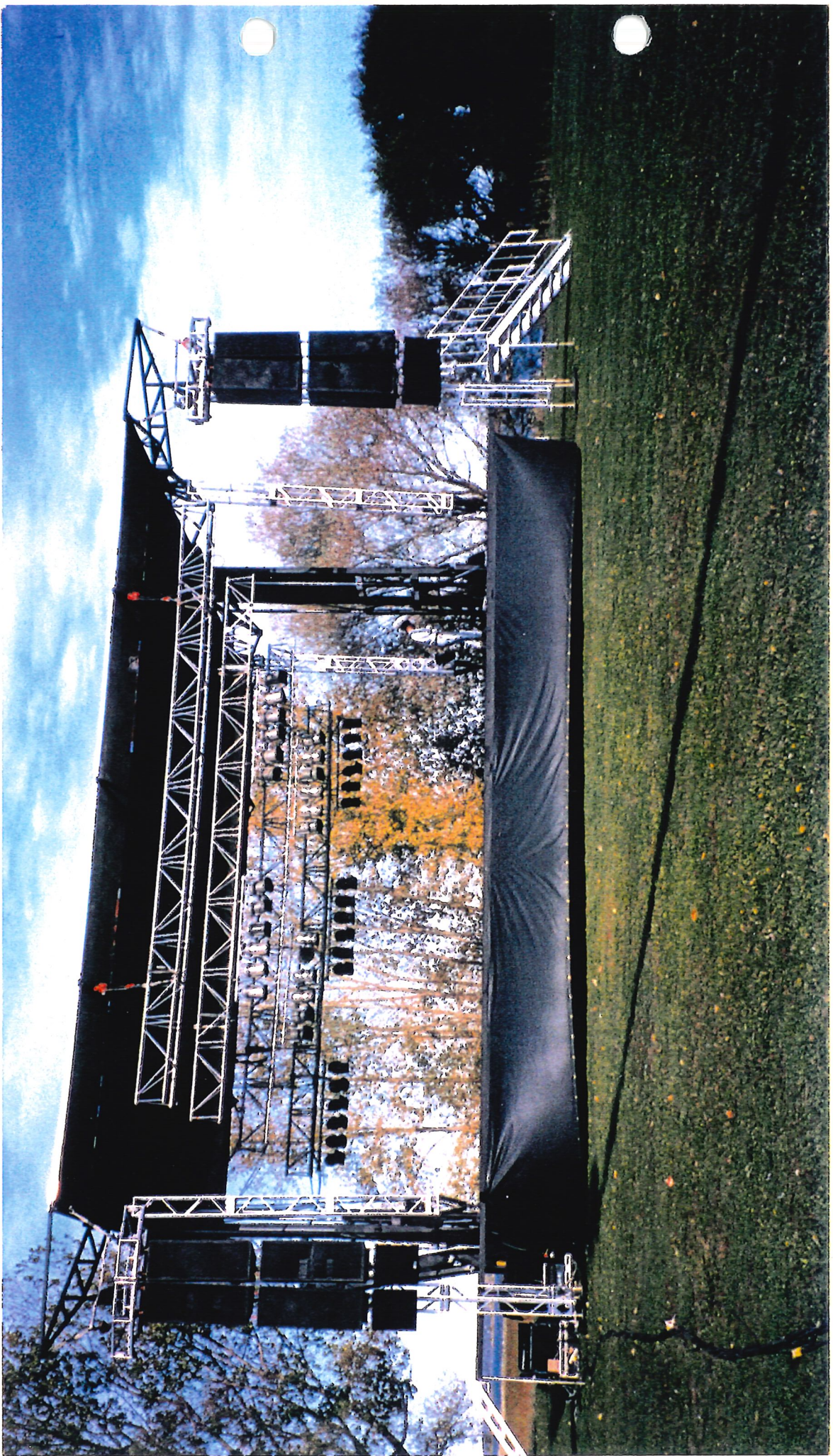
CAUTION

READ ALL INSTRUCTIONS CAREFULLY BEFORE INSTALLATION

The Stagevan III is a reliable unit. If, like your automobile, the Stagevan III is properly maintained and correctly used, it will perform effectively and efficiently for many years.

When using this equipment, always exercise basic safety precautions, including the following:

- **Always keep in mind that hydraulics are much stronger than the human body.**
- This is staging equipment and should only be used for this purpose. All instructions must be followed and cautionary notes respected.
- Avoid walking on fibre roof. If absolutely essential, proceed delicately and shift weight on structure rather than on unsupported fibre.
- The stage unit should be installed on a relatively level and smooth surface. The ground must be firm enough to support the wheels and stabilisers of the unit without sinking.
- Operate the hydraulic system with care and caution at all times. Never overtax the hydraulic system by running the motor at full throttle or by jerking the levers. Never let motor run on idle as this causes foaming of oil in tank.
- Execute installation and dismantling steps in sequence as described in this guide.
- When replacing hardware or accessories, use the same type as supplied by Stageline. Pins and bolts which are frequently replaced must be of same calibre and grade.
- **Do not attempt to customise the unit or make any structural changes without first consulting Stageline.**
- The Stagevan III must be operated only by personnel who are trained and certified by Stageline.





STAGEVAN III

SPECIFICATIONS

DIMENSIONS ON THE ROAD

Length (overall)	
Gooseneck	52'6"
Length of trailer	42'
Width (overall)	8'6"
Height (overall)	13'4"

STAGE DIMENSIONS

Stage floor	40 x 32' or 40'
Ground to floor height	3'6"
Ground to floor (optional)	3'6" to 6'
Maximum height	
Floor to roof	23'4" to 25'
Floor to truss	21'4"
Roof dimensions	42' x 34' or 42'

[8 rigging points with a 1,000 lbs. capacity each, and 2 of 500 lbs. each.]

WEIGHT

Net weight of the vehicle	19 tons
Transport capacity	4,500 lbs.

[Storage capacity of 38' length, 5' width, 8' height.]

STAGEVAN III

ACCESSORIES

- 4 corner towers, accessories and hardware
- 2 custom sound-wings and hardware
- 8 square lock pins for centre columns
- Set of pins and hardware for corner towers
- 1 rear windwall
- 2 side windwalls
- 1 set gooseneck cargo steel fencing
- 1 set plates to cover hinges
- Keys
- Registration papers
- Operating manual

RECOMMENDED TOOLS

- 1 ladder or step ladder
- 2 adjustable wrenches (#15, #10)
- 1 hammer
- 1 punch
- 1 pair of pliers
- 1 assorted screwdriver kit

HOW TO OPERATE THE HYDRAULIC SYSTEM

IMPORTANT NOTE: STAGEVAN III HYDRAULIC LEVERS ARE NOT DISPOSED IN THE SAME MANNER AS THOSE OF THE STAGEVAN II. ALWAYS REFER TO IDENTIFICATION LABELS WHILE OPERATING SEVERE DAMAGE CAN OCCUR.

READ CAREFULLY

- The hydraulic control levers are spring operated. In case of problems, release the lever; motion will stop automatically.
- Always operate the hydraulic system at low throttle. The hydraulic system is easier to control at low RPMs.

CAUTION For stages equipped with both a gas engine and an electric motor, use only one power unit at a time. The use of two power units at the same time is strictly forbidden.

For identification of the controls, see Figure 2: Front Hydraulic Control Panel, page 8, Figure 3: Rear Hydraulic Control Panel, page 9.

1. USING GAS ENGINE

- Turn engine switch On.
- Set choke to On position.
- Start engine by pulling on crank located on side of engine.
- Turn choke Off. In cold conditions, it may be necessary to keep choke at mid-position.
- Do not leave motor idling. Keep throttle slightly open.
- The hydraulic system requires different minimum RPM for different operations.

Example: the floor cylinders require more revolutions.

Sliding controls are on right-hand side
Arrow direction is ON

GAS LINE →

CHOKE ←

THROTTLE ←

2. HYDRAULIC STABILIZERS AND ROOF

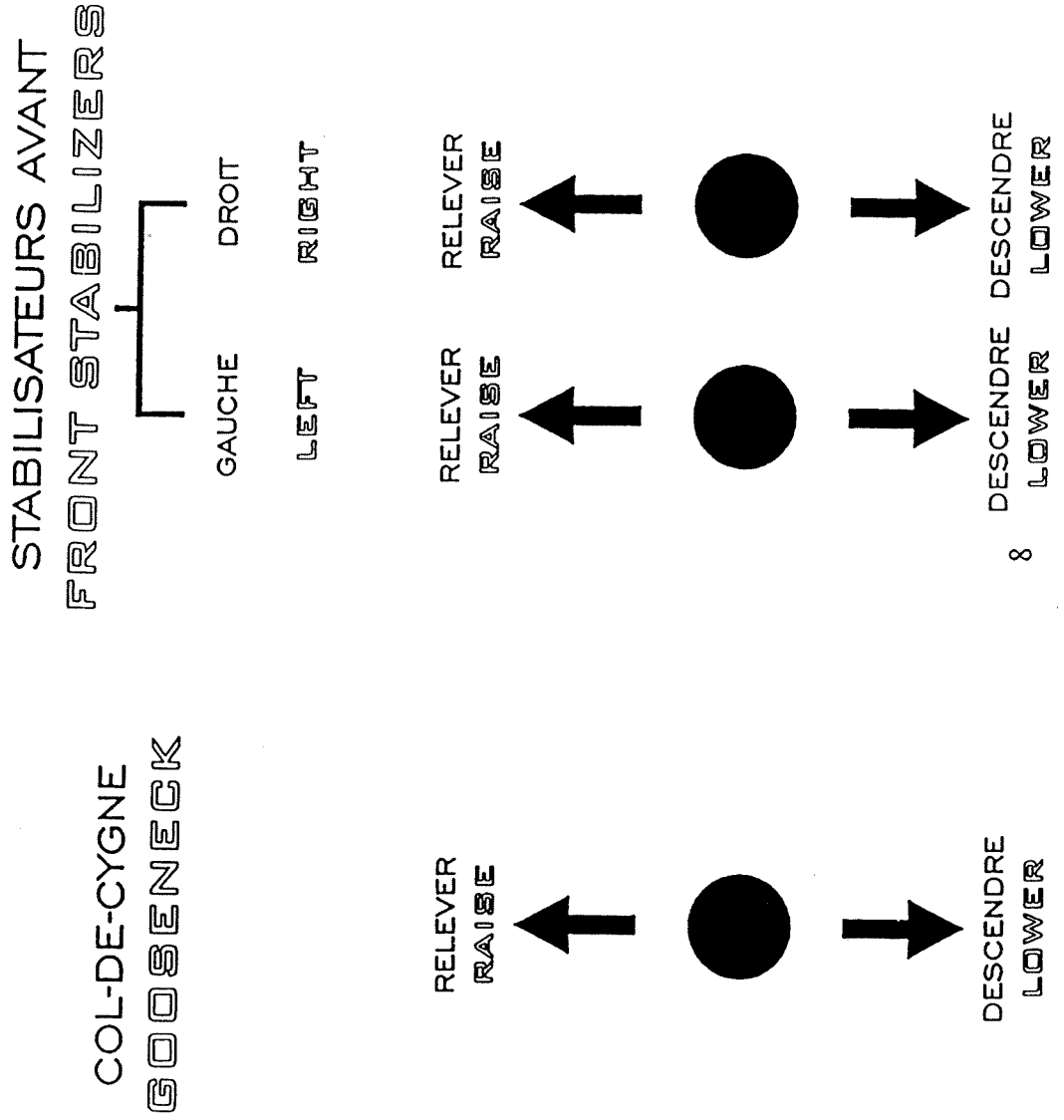
- To activate hydraulic stabilisers, push on flow control button located in rear control panel.
- To activate hydraulic roof and stage levers, pull on flow control button.

CAUTION Never operate more than one control at a time. In case of problems, release control. Mechanism will stop automatically.

STAGEVAN III

HYDRAULIC SYSTEM

FIGURE 2: FRONT HYDRAULIC CONTROL PANEL

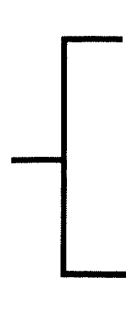


STAGEVAN III

HYDRAULIC SYSTEM

FIGURE 3: REAR HYDRAULIC CONTROL PANEL

STABILISATEURS ARRIÈRE REAR STABILIZERS



GAUCHE
LEFT

DROIT
RIGHT

RELEVER
RAISE

RELEVER
RAISE

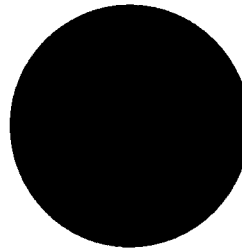


DESCENDRE
LOWER

DESCENDRE
LOWER

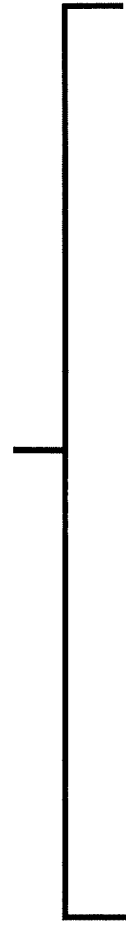
COMMUTATEUR
SWITH VALVE

POUSSER = STABILISATEURS
PUSH = STABILIZERS



TIRER = SCÈNE
PULL = STAGE

SCÈNE - STAGE



AILE
GAUCHE
LEFT
WING

PLANCHER
GAUCHE
LEFT
FLOOR

FLIP
GAUCHE
LEFT
FLAP

FLIP
DROIT
RIGHT
FLAP

PLANCHER
DROIT
RIGHT
FLOOR

AILE
DROITE
RIGHT
WING

OUVRIR
OPEN

OUVRIR
OPEN

OUVRIR
OPEN

OUVRIR
OPEN

OUVRIR
OPEN

OUVRIR
OPEN



FERMER
CLOSE

FERMER
CLOSE

OUVRIR
OPEN

OUVRIR
OPEN

FERMER
CLOSE

FERMER
CLOSE

OUVRIR
OPEN

OUVRIR
OPEN

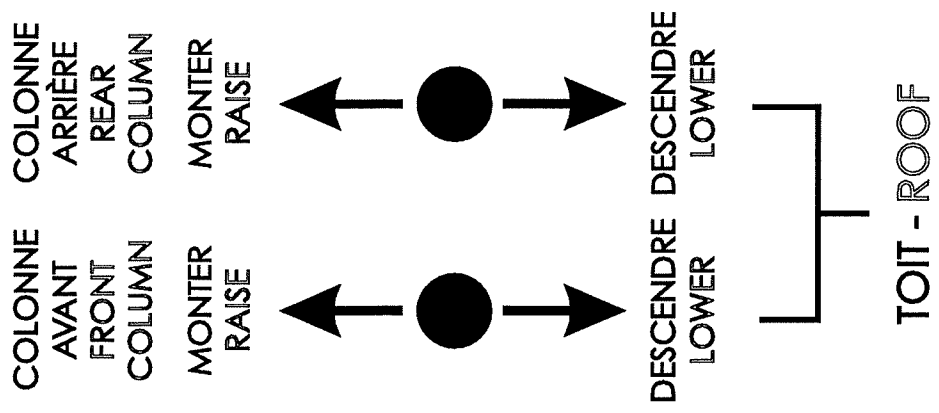
FERMER
CLOSE

FERMER
CLOSE

STAGEVAN III

HYDRAULIC SYSTEM

FIGURE 3a: ROOF CONTROL LEVERS



40' x 40', ROOF HEIGHT 23'**INSTALLATION**

These instructions have been prepared for the most common installation set-up (40' x 40' x 23'). Installation instructions for other options (variable roof height, stage depth, etc.) have been inserted where applicable.

Driver side is downstage. In the event driving in with proper side facing audience is impossible, side-wings, platforms, etc. and windwalls must be disregarded. Make sure overhead is clear of aerial electric cables, tree limbs, street lamps, etc. Remember trailer size is not ultimate configuration.

Know the "**HOW TO OPERATE THE HYDRAULIC SYSTEM.**" well, before proceeding.

A- LEVELLING THE TRAILER UNIT**1- Preparation**

- Remove front and back strap ratchets that hold side panels and those of floor together.
- Open side panels approx. 3'
- Take removable beam, ladder, tools, etc. out.
- Remove plate from center of aluminum truss. (ladder)
- Remove pins from sides of roof flap.
- Lock aluminum truss at 90 degrees to flap with flat bar brackets and secure.

2- Leveling

- Remove lock pins (6) from stabilizer cross-braces.
- Place one shim under each stabilizer (or more if ground uneven).
- If lifting wheels off the ground, install axle restraining chains.
- Using hydraulic stabilizers (4), level trailer on its length, then on it's width . *During this operation, trailer must remain relatively level. Raise in small increments (maximum 6 inches at a time).* (Layout1) Never attempt to raise one end of trailer fully before the other.

If ground is soft, for greater stability it is preferable to leave wheels on the ground.

- Insert lock pins (8) into hydraulic stabilizers.
- With wrench, adjust cross-braces to closest matching holes
- Pin, secure and tighten bolt to apply pressure on cross-braces
- Install center beam supports under trailer

CAUTION

Ensure that lock pins have been properly inserted into hydraulic stabilizers before proceeding with installation.

B. OPENING THE STAGE UNIT

1. ROOF EXTENSION FLAPS



This symbol represents - optional steps for sound towers, FOH lighting and soft goods.

- Open roof flaps 10 degrees. Do not jerk hydraulics. Handle levers accordingly.

CAUTION

Never operate the two controls simultaneously. Ensure that the space on either side of the stage unit is clear before unfolding roof panels. (Layout 2) Do not walk underneath roof panels until they have been secured on corner posts.

- Open side panels enough for swinging flap supports to clear ground.
- Bring flap supports to position and secure. *The four corner supports have a retractable segment by their hinge. Retract and secure these.*
- *Do not secure the two front corner supports and leave these slightly out from side of flap.*

OPENING FLAPS: PROCEED WITH CARE. FRONT AND REAR FLAPS DO NOT INSTALL IN SAME MANNER. HANDLE HYDRAULICS SMOOTHLY, WITHOUT JERKING

- **REAR FLAP:** Open flap till truss reaches supports. Verify that corner supports will clear aluminum brackets, then open flap fully.
- **FRONT FLAP:** Open flap till truss reaches supports. *Remember that corner supports are exterior to flap.* Remove both aluminum brackets and lower flap fully onto supports. Now position corner supports and secure. Replace aluminum brackets and pin.

2- SIDE PANELS AND ROOF PANELS

- Raise side panels enough to clear swinging deck beams.
- Distribute leveling jacks.
- Open deck support beams (start with segmented section. This gives access to leveling jacks). Install cross-braces.
- Insert leveling jacks in aluminum stabilizers. Pin and secure.

Place a shim beneath each stabilizer.

- Level beams

- Install steel cable at center of truss on the panels.
- Raise panels to horizontal. Watch that cable does not snag lip of floor beams.
- Remove pins and screw-in handle that hold floors closed. Sides and center.
- Using control levers, lower floor panels to approx. 2" from beams. Pull slowly and gently on lever (Layout 3).

CAUTION Never operate more than one control lever at a time. To prevent accidents, ensure that the space which will occupy the floor is clear. Do not walk beneath floor panels until they rest on beams.

- Lower side panel very slowly till you can hook cable to floor.
- Raise panel gently, and alternate with lowering floor, keeping a constant motion and one(1) foot intervals.

CAUTION Do not lower floor completely. Damage to equipment can occur.

- When floor is ready to descend on it's own weight, (approx. 6' from end of beams) let floor rest on beams, remove cable from floor and proceed with lowering completely.
- *Make sure floors are well aligned and that beams clear hinges*
- Lock floor to beams (bolted underneath) .
- Repeat same operations for other side.
- Install cover plates over hinges.
- Lower front and rear roof panels to working level. (Layout 5)

DANGER

Do not hang any load (except banners) from roof structure or outriggers until corner posts and roof columns have been locked with pins (8 pins), and sound towers have been levelled. (Layout 7). The hydraulic cylinders are not rated to lift any load other than the roof structure.

LIFTING ROOF AND INSTALLING CORNER POSTS

- Distribute trussing on deck.
- Attach both 4' corner tower components to bracket on front truss corners. Pin and secure.
- ☞ Rig hoisting equipment on FOH extensions. If not rigging yourself, verify safety of rigging.

DANGER

Do not hang any extra load (except banners) from roof structure or outriggers until corner towers and roof columns have been locked with pins (8 pins), and sound towers have been levelled. (Layout 7). The hydraulic cylinders are not rated to lift any load other than the roof structure.

- ☞ Install sound extensions to tip of aluminum truss. Pin and secure.
- ☞ Add cross braces, pin and secure.
- ☞ Install all banners now. (Optional)
- ☞ Raise front panel to horizontal.
- ☞ Install windwalls and other soft goods on back panel.



☞ **Installation of Rear and Side Windwalls (optional 40' x 23')**

The Stagevan 3 windwalls come in three sections: one 40' X 23' rear section and two 17' X 23' side sections.

- To install rear windwall, attach upper horizontal cable to roof panel and bottom horizontal cable to floor panel. Tighten upper cable only. Fasten *only* upper end of vertical cables to roof structure.

CAUTION Do not fasten lower end of vertical cables until roof panel has been locked in the horizontal position.
--

- To install side windwalls, attach 2 upper steel cables to roof structure.
Do not tighten downstage cables until roof panel is horizontal.

DANGER Do not hang any load other than banners from roof structure or outriggers until corner towers and roof columns have been locked with pins (8 pins). The hydraulic cylinders are not rated to lift any load other than the roof structure.



- Attach both 3' corner tower components to bracket on rear truss corners. Pin and secure
 - Raise rear panel to horizontal.
- ☞ Tighten downstage horizontal side cables.

4. RAISING ROOF STRUCTURE TO 23'

CAUTION Never attempt to raise the roof structure unless the panels are in the horizontal position. Severe damage could occur.

- Ensure that the windwalls and steel cables are free and do not become pinched or caught while raising the roof.
- Ensure that hydraulic hoses have free movement and do not bind and snag.
- Raise the roof structure by pulling on the front and back column control levers , alternating at approximately every 8”.

WARNING Always raise and lower the roof slowly and evenly on both sides.

- *The front cylinders tend to raise more slowly than the rear cylinders.*
- Raise roof approx. 4’
- Attach following 6’ tower components to all four corners (if trusses drag, protect deck with rag, glove, cardboard, etc., that you can slip under dragging truss) .
- Resume raising operation.
- Once the first half of roof structure has been raised to its maximum height, lock roof columns with pins (4) in now apparent matching square holes and secure.
- Resume raising roof
- Attach following tower components as roof is raised.

- Once roof is fully raised, lock roof columns with remaining pins(4) and secure.
- Once locked, ease the hydraulic pressure on the columns so that the load rests on the pins.
- Install removable tower brackets on four (4) corners of stage.

5. FINAL POSITIONING OF ROOF (and optional windwalls)

- Attach remaining corner tower components and pin and secure in floor brackets(match numbers). *You may wish to lower side panels very delicately in order to install these.* If the holes of the corner towers do not line up with those of floor brackets, reposition the roof panels slightly. *If necessary, operate hydraulic system at low RPM to adjust roof panels until holes match.*

DANGER

Do not hang any load (except banners) from roof structure or outriggers until corner towers and roof columns have been locked with pins (8 pins) , and sound towers have been levelled (Layout 7) .

☞ Windwalls

- *Ensure that lower vertical and horizontal cables are attached and tightened.*

III. HITCH -GOOSENECK

NOTE Do not raise gooseneck until the stage has been completely opened.

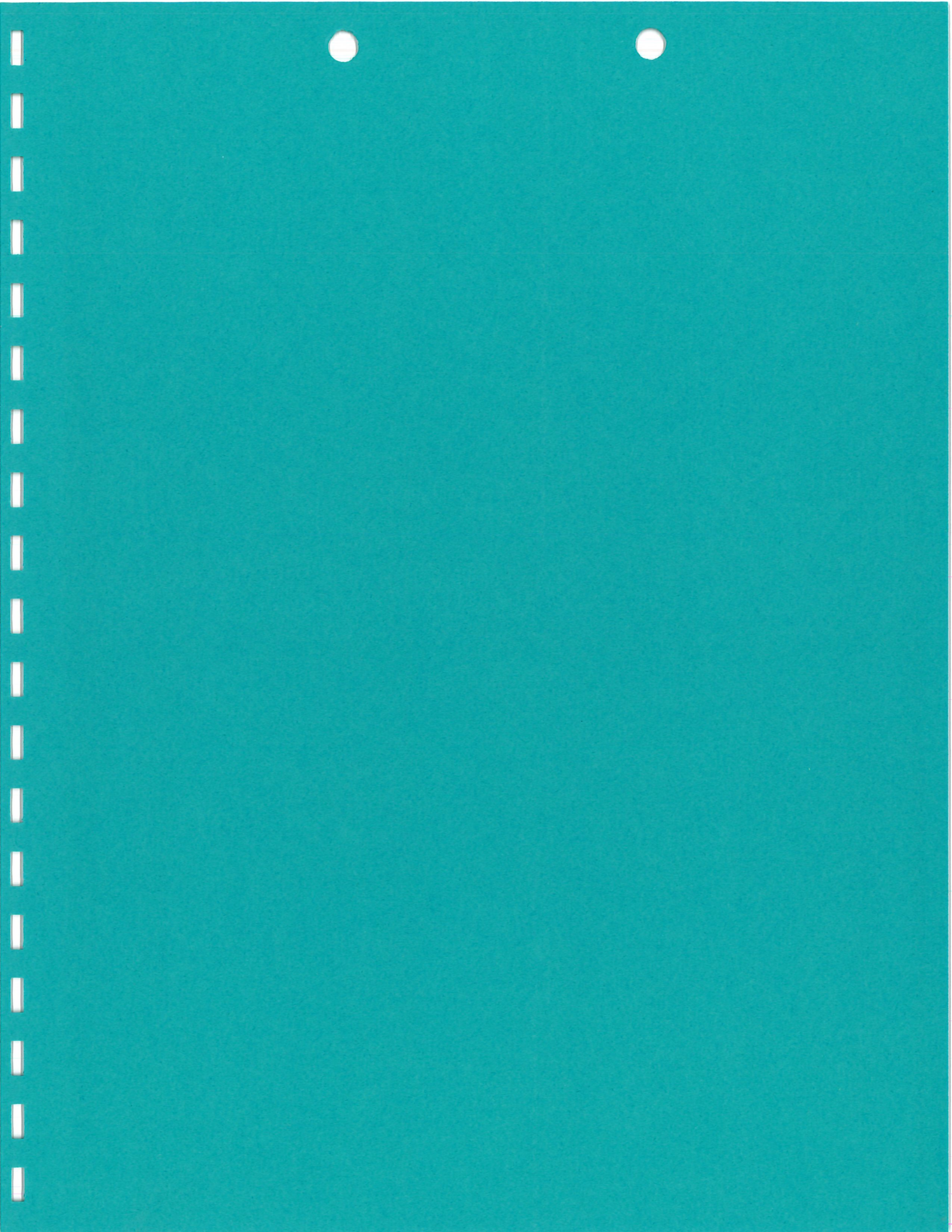
- Unlock gooseneck: withdraw lock pins (2) from telescopic braces.
- Raise gooseneck until vertical by operating the hydraulic system.
- Reinsert lock pins (2) in matching holes in braces.

INSTALLATION COMPLETE

- ☞ Position staircases as necessary. Maximum allowable load on staircases is 700 lbs. Guard rails must be installed on rear back floor panel at all times.
- If staircase is not installed opposite windwall opening, you can keep opening closed. Open under heavy winds.

CAUTION: Aluminum rigging beam is rated for 1,000 lbs
Steel corner support is rated for 2,000 lbs
Never attempt to bear both loads at once. Structure is not rated for 3,000 lbs.
Use side rigging or front rigging. Risk of injury or damage could occur.

IMPORTANT During the installation of sound and lighting equipment, do not jig or raise loads with jerky movements. This could cause excess stress on the structure. Raise slowly and evenly.



DISMANTLING

CAUTION The dismantling of the stage begins once all sound and lighting equipment and decorations have been removed.

Read Carefully

I. HITCH

LOWERING GOOSENECK

- Unlock gooseneck by removing lock pins (2) from telescopic braces.
- Using the hydraulic system, lower gooseneck slowly and carefully to the horizontal position.
- When gooseneck is horizontal, replace lock pins in corresponding holes.
- Secure lock pins with counter-pins (R-clips).

CAUTION Do not move stage until lock pins have been inserted and secured into braces of gooseneck.

II. CLOSING THE STAGE UNIT

WINDWALLS

- *Unhook all lower vertical cables.*
- *Unhook lower lateral cables.*

LOWERING ROOF

CAUTION The removal of a pin requires minimal clearance. Never use excessive force with the hydraulic system.

- Remove lock pins from four (4) corner towers. *It may be necessary to relieve the weight of the roof panel to release certain pins. In this case, operate hydraulic system at low RPM and raise side panel slightly and very delicately.*
- Remove bottom section of corner towers.
- *For folding of windwalls in future steps, you may want to keep upstage area clear of equipment.*
- Remove lock pins (4) from bottom section of roof columns. *If the hydraulic pressure has been released, the roof structure will be resting on the lock pins. If this is the case, to relieve the pins, raise the roof structure lightly.*

NOTE Reduce the RPMs of the motor for this step.

WARNING Do not lower side panels before lowering the roof structure.

- Lower roof structure slowly and evenly. It is not necessary to power the engine to lower the roof structure. (Layout 7)
- Do not lower roof more than 2'.
- Remove next sections of corner towers as roof is lowered.

- Resume lowering till pins on upper section of roof columns can be removed. Remove pins.
- Lower roof completely removing towers alternately.
- Lower side panels to working height.
- Remove remaining rear corner tower sections.
- Remove and fold windwalls.
- Remove remaining corner tower sections from downstage.
- Remove all banners, skirting, hoisting mechanisms, etc.
- Remove sound extensions from tip of aluminum truss
- Raise roof panels to horizontal.

ROOF AND FLOOR PANELS

Important: Remove cover plates from floor hinges.

Removable brackets must be taken off corners of stage.

WARNING Disregarding these *important* steps can cause damage to deck and floor structure.

1. *Load all equipment to be transported in trailer unit.*
 - Using the hydraulic system, raise floor panels till completely closed
 - Lock and secure floors (sides and centre screw- in handle)
 - Lower side panels to working height

CLOSING FLAPS: PROCEED WITH CARE. FRONT AND REAR FLAPS DO NOT DISMANTLE IN SAME MANNER. HANDLE HYDRAULICS SMOOTHLY, WITHOUT JERKING

- **REAR FLAP:** Close flap fully. Fold in flap supports, pin and secure for travel.

WARNING *The four corner supports have a retractable segment by their hinge. Slide in tubing and secure. Disregarding these important steps can cause severe damage to structure.*

- **FRONT FLAP:** Remove both aluminum brackets. Now remove corner support cross-braces and bring support exterior to flap. Replace aluminum brackets and pin. Close flap fully. Fold in flap supports, pin and secure for travel.

- Raise side panels till they clear swinging floor beams
- Remove cross-braces from beams, secure stabilisers for travel and swing the beams shut. Pin and secure. (Segmented section and "floating" cross-brace travel on chassis. Pin and secure.
- Store levelling jacks in floors
- Lower side panels leaving sufficient space for operations

Closing Stage Into Trailer

- Remove centre beam supports(under trailer)

Load all you need before closing

CAUTION

Make sure there are no obstructions between closed floor and closing roof panels.

- Close side panels completely

III. LOWERING TO GROUND LEVEL AND TRANSFORMATION TO TRAILER

LOWERING TO GROUND LEVEL

- Remove lock pins (6) from stabiliser cross-braces.
Caution: Bring cross-brace to minimum opening using threaded rod.
- Remove lock pins (8) from hydraulic stabilizers.
- Using the hydraulic system, lower stage unit slowly and steadily until it rests on its wheels.

Be sure air ride suspension sets evenly in sockets in the process.

During this operation, trailer must remain level. Lower in small increments (maximum 6" at a time).

- Resume lowering till pins on upper section of roof columns can be removed. Remove pins.
- Lower roof completely removing towers alternately.
- Lower side panels to working height.
- Remove remaining rear corner tower sections.
- Remove and fold windwalls.
- Remove remaining corner tower sections from downstage.
- Remove all banners, skirting, hoisting mechanisms, etc.
- Remove sound extensions from tip of aluminum truss
- Raise roof panels to horizontal.

ROOF AND FLOOR PANELS

*Important: Remove cover plates from floor hinges.
Removable brackets must be taken off corners of stage.*

WARNING Disregarding these *important* steps can cause damage to deck and floor structure.

OPENING FLAPS: PROCEED WITH CARE. FRONT AND REAR FLAPS DO NOT INSTALL IN SAME MANNER. HANDLE HYDRAULICS SMOOTHLY, WITHOUT JERKING

1. *Load all equipment to be transported in trailer unit.*
 - Using the hydraulic system, raise floor panels till completely closed
 - Lock and secure floors (sides and centre screw- in handle)
 - Lower side panels to working height
 - Close flaps
 - Fold in flap supports, pin and secure for travel
 - Raise side panels till they clear swinging floor beams
 - Remove cross-braces from beams, secure stabilisers for travel and swing the beams shut. Pin and secure. (Segmented section and “floating” cross-brace travel on chassis. Pin and secure.
 - Store levelling jacks in floors
 - Lower side panels leaving sufficient space for operations

TRANSFORMATION TO TRAILER

- Remove aluminum brackets from flap trusses. (front brackets travel in motor compartment, rear bracket travel on truss, pin and secure)
- Install plate from center of aluminum truss. (ladder)
- Install pins on sides of roof flap and secure.

NOTE

While the wheels are raised above ground, the air ride suspension (air-bags) empties out. Do not drop stage onto its wheels during dismantling. Ensure that air-bags do not become wedged while inflating

- Lower the structure to the hitch level of the tractor.
- Attach the tractor.
- Using the hydraulic system, raise the four (4) stabilizers completely.
- Insert lock pins (6) in matching holes in cross-braces.
- Remove axle restraining chains.

IMPORTANT

Make certain that lock pins are inserted into gooseneck braces before hitching tractor to stage unit.

Do not move the stage unit until the air ride suspension is fully functional (balloons filled with air). The suspension should fill itself with the air reservoir. (highway model)

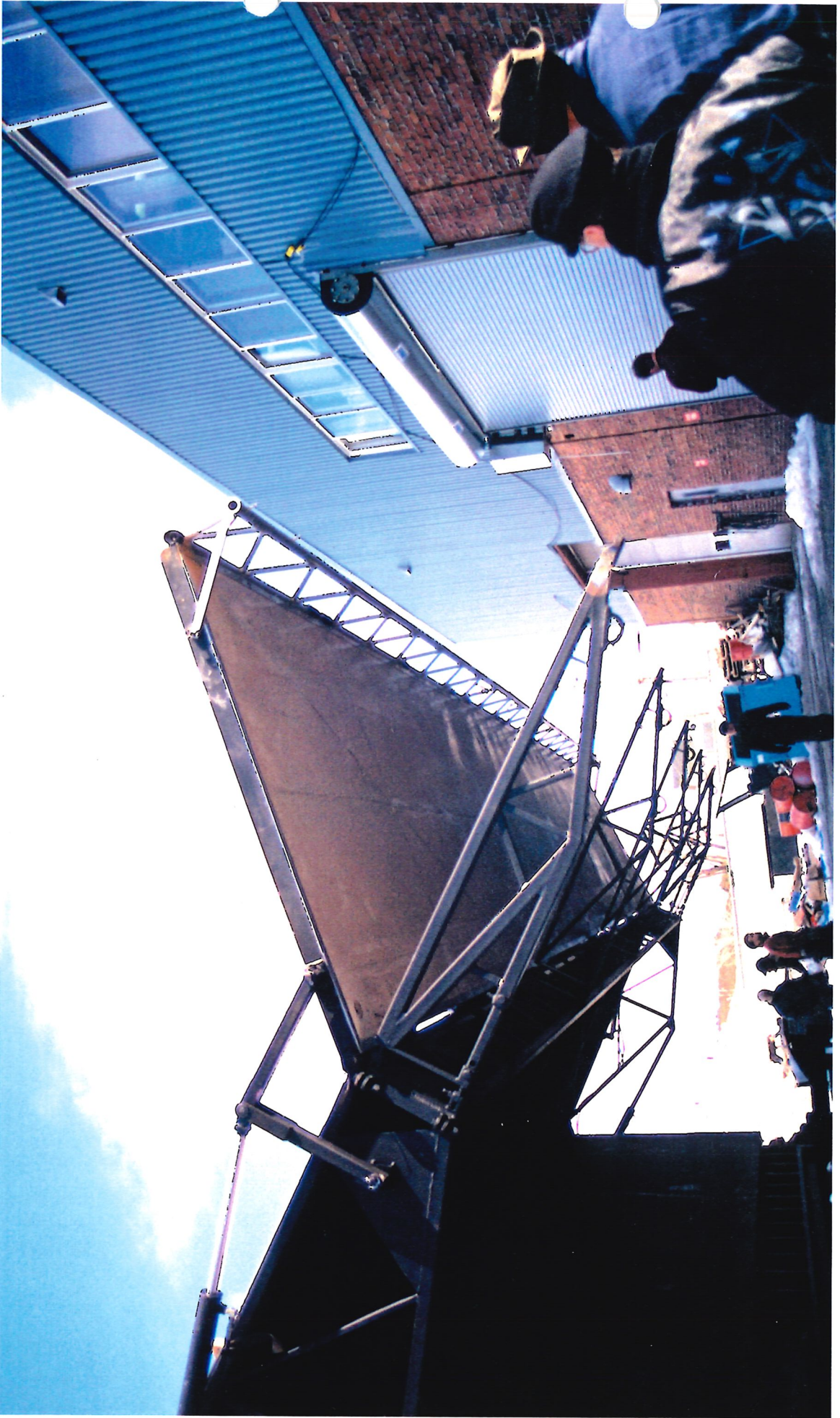
- *Ensure that air ride suspension is evenly set in its socket.*

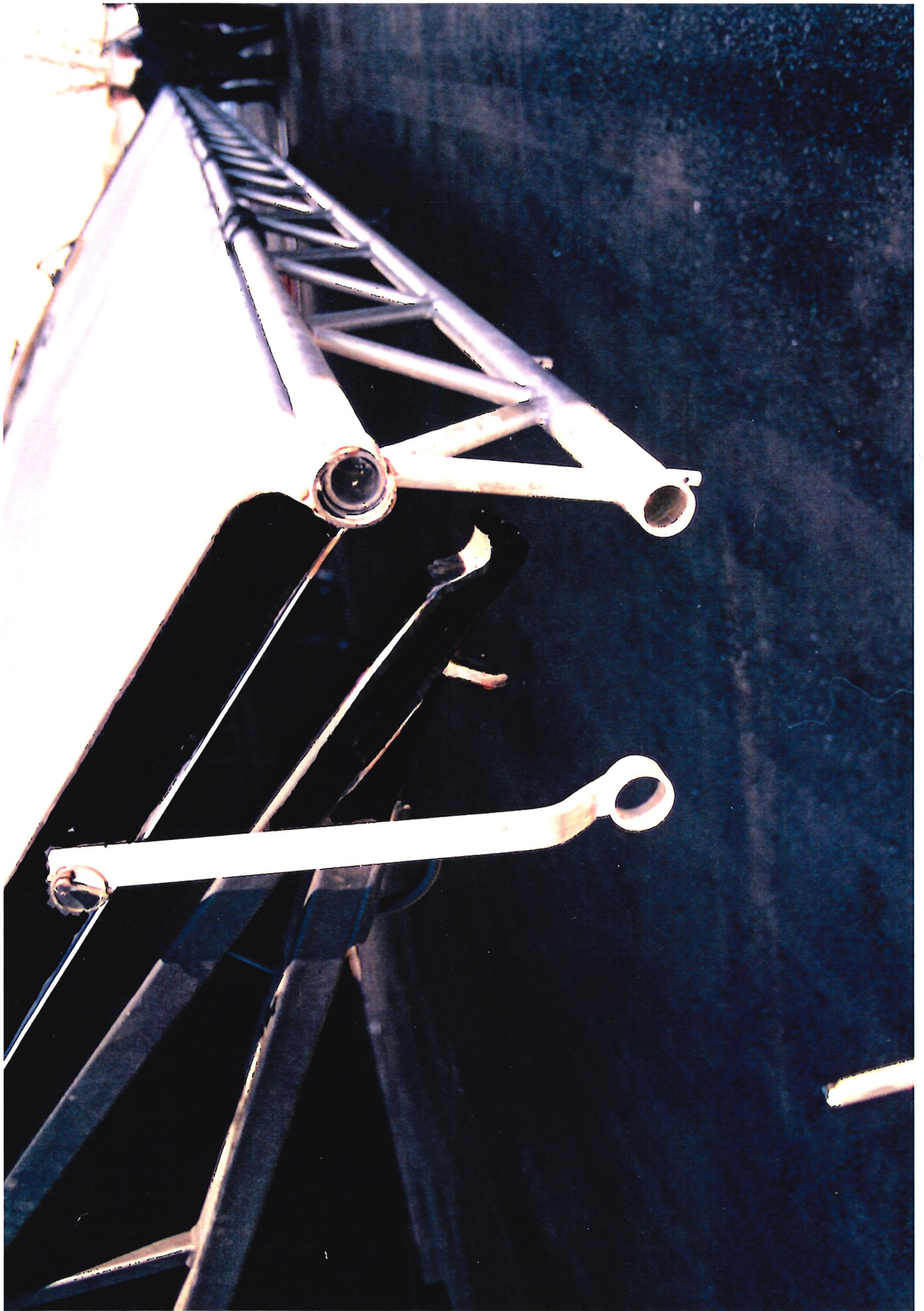
RATCHET STRAPS

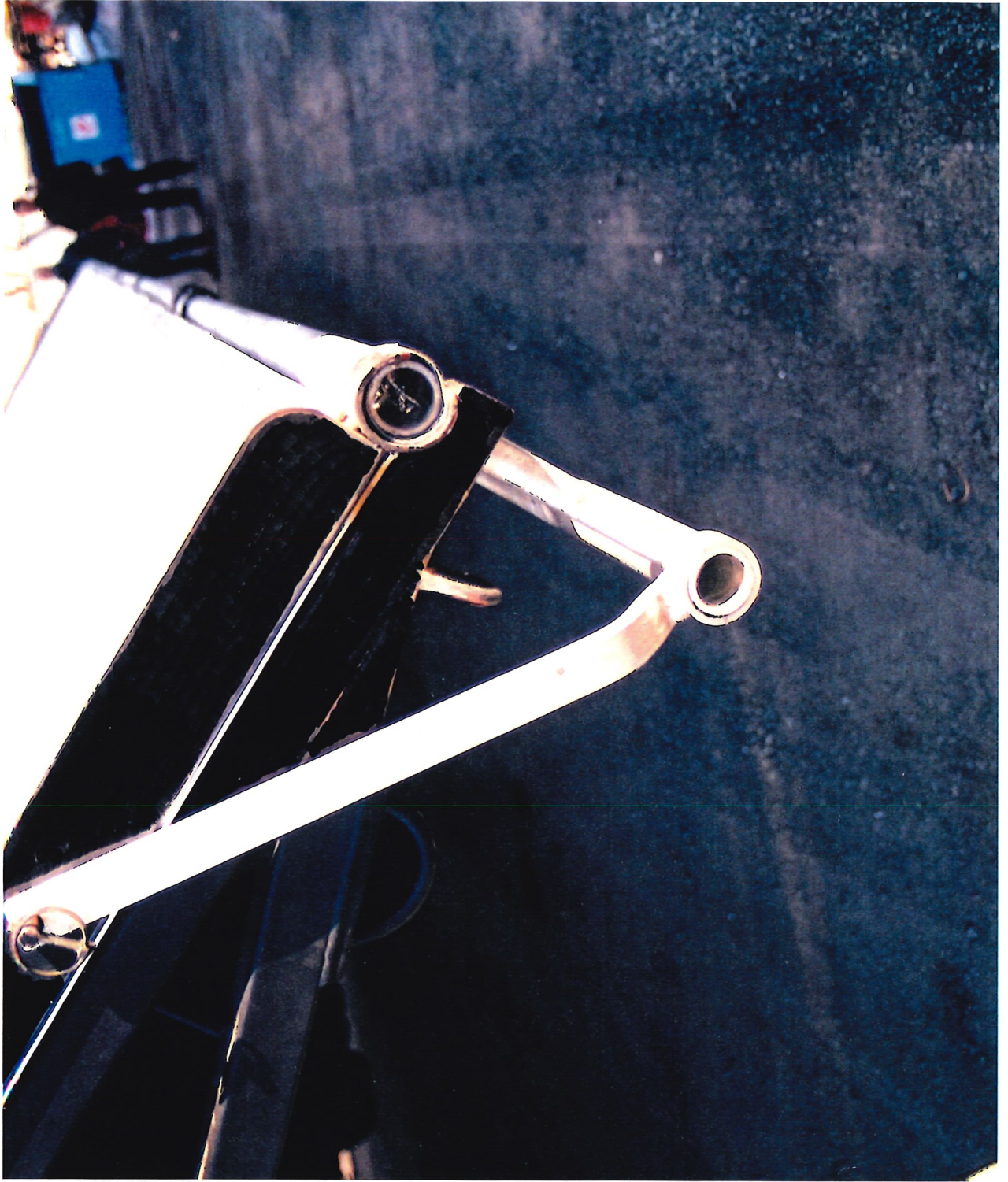
- Fasten straps to secure roof panels (front and rear).
- Fasten straps to secure floor panels.(front and rear)

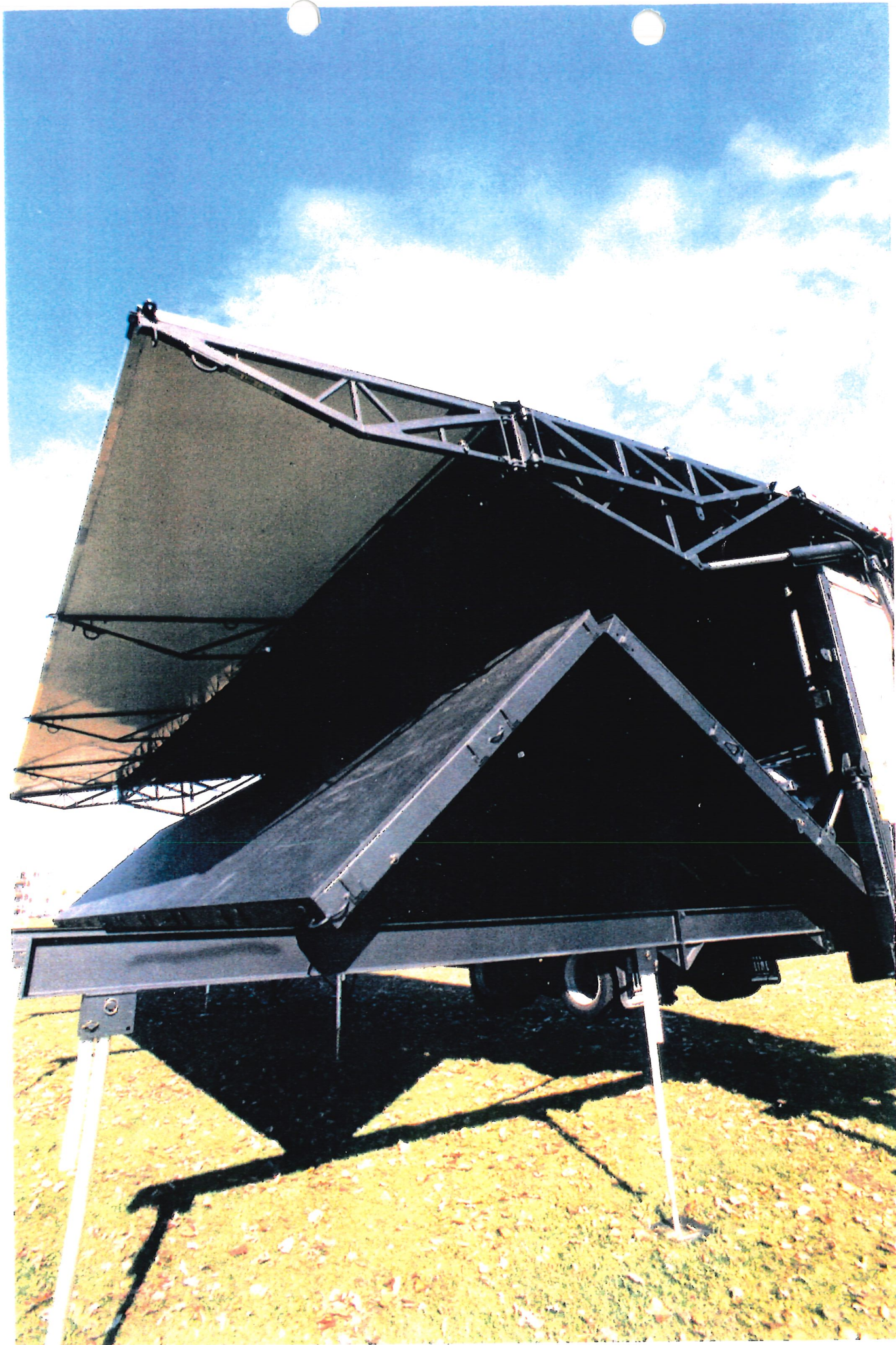
NOTE

Make certain that the trailer is ready for the road. All movable equipment must be attached and secured, the suspension system functional, etc.









STAGEVAN III

MAINTENANCE

Gas engine:	Honda GX 160, 4 stroke	See Honda manual
6 mths	engine oil: SAE 10W40 SE or SF	every 100 hours or
	Spark plugs: NGK BPR6ES	every 100 hours or 6 mths
	Gas: unleaded only	
Axle:	Gear oil	SAE 80W90
	Air brake adjustment	automatic
Hydraulic system:	Hydraulic oil or Dextron III transmission	approx. 85 gal.
Lubrication:	Roof panel hinges	70 grease fittings
	Floor panel hinges	168 grease fittings
	Roof extension panel hinges	50 grease fittings
	Gooseneck braces & hinges	6 grease fittings
	Axles brake camshaft	8 grease fittings
	Hydraulic cylinders	
	floor	8 grease fittings
	roof panel	8 grease fittings
Tires:	Michelin 215/75 R 17.5 XTA	
	Max. pressure 125 psi	

N.B. As metal parts tend to rust easily, all parts subjected to friction should be repainted and maintained as needed.

TROUBLESHOOTING

Problem	Solution
Gas engine will not start	<ul style="list-style-type: none">• Verify fuel level• Verify that fuel valve is in Open position (under gas reservoir)• Check spark plug connection• Verify oil level(has safety shut-off)
Gas engine will not idle properly	<ul style="list-style-type: none">• Check if Choke has been left On; if so turn off (lever under gas reservoir)• Time to replace spark plug• Clean air filter with solvent (or gas)
Electrical motor stopped working	<ul style="list-style-type: none">• Check if electrical circuit supplies 115V., 20 amps min.• Check if electrical motor compartment door is open for ventilation.• Check if motor casing is hot. Let motor cool (30 to 60 minutes).• Remove any material (extra weight) from floor panel.
Electrical motor will not raise floor panel	<ul style="list-style-type: none">• The Stagevan air reservoir is empty. Hook the tractor parking brake hose (red hose) to the Stagevan and release parking brakes. Stagevan air reservoir will inflate.
Air Ride suspension will not inflate	<ul style="list-style-type: none">• The Stagevan air reservoir is empty. Hook the tractor parking brake hose (red hose) to the Stagevan and release parking brakes. Stagevan air reservoir will inflate.
Hydraulic system will not work	<ul style="list-style-type: none">• Locking pin not removed• Check the main valve at the tank• Check pump/engine coupling• Check oil level• Check for leaks

STAGEVAN III

CUSTOMER SERVICE

The mobile stage unit you have purchased has been carefully engineered and manufactured under Stageline's quality standards and will give you satisfactory and dependable operation.

However, like all mechanical equipment, the mobile stage unit may require adjustment, maintenance or replacement parts. Should you need technical assistance or parts, please contact us toll free at:

1-800-26 STAGE or (514) 589-1063

Or write us to:

Stageline

Customer Service

700 Marsolais

L'Assomption, Quebec

Canada J5W 2G9

Replacement parts will be made available at current prices. At your request, prices may be quoted in advance. For parts ordered by mail, transportation charges will be applied from shipping point.

STAGEVAN III

PERIODIC MAINTENANCE CHECK LIST

To prepare trailer and stage for a tour.

To prepare trailer and stage after prolonged storage.

- 1. Road check:**
 - Lights functional
 - Reflectors intact
 - Tire wear
 - Spare tire inflated
 - Axle oil level
 - Suspension adjusted
 - Breaks adjusted
 - Hose fittings
 - Drain water from air reservoir.
 - Perform a road inspection if needed.

- 2. Honda motor tune-up:**
 - Change spark plug
 - Clean carburator
 - Change oil
 - Change gas
 - Have spare spark plug and pull cord.

- 3. Hydraulics:**
 - Change hydraulic oil every five (5) years
 - Open and close cylinders five (5) times each.
 - Verify that fittings are clean and don't leak.
 - Check for wear on hoses due to friction, etc. Change if needed.
 - Check for any sign of leakage underneath trailer. If leakage exists, check oil level.

- 4. Test setup:**
 - Level trailer.
 - Ensure that dollies and stabilisers run smoothly.
 - Remember the five (5) cylinder run rule.
 - Wash inside and out.
 - Check all visible welded joint.
 - Check all steel components for visible twisting, breakage or cracks.
 - Grease hinges and cylinders.
 - Paint if needed.
 - Install and check windwalls.
 - Check waterproofness of roof.
 - Check tool kit and accessories.